



Nilfisk

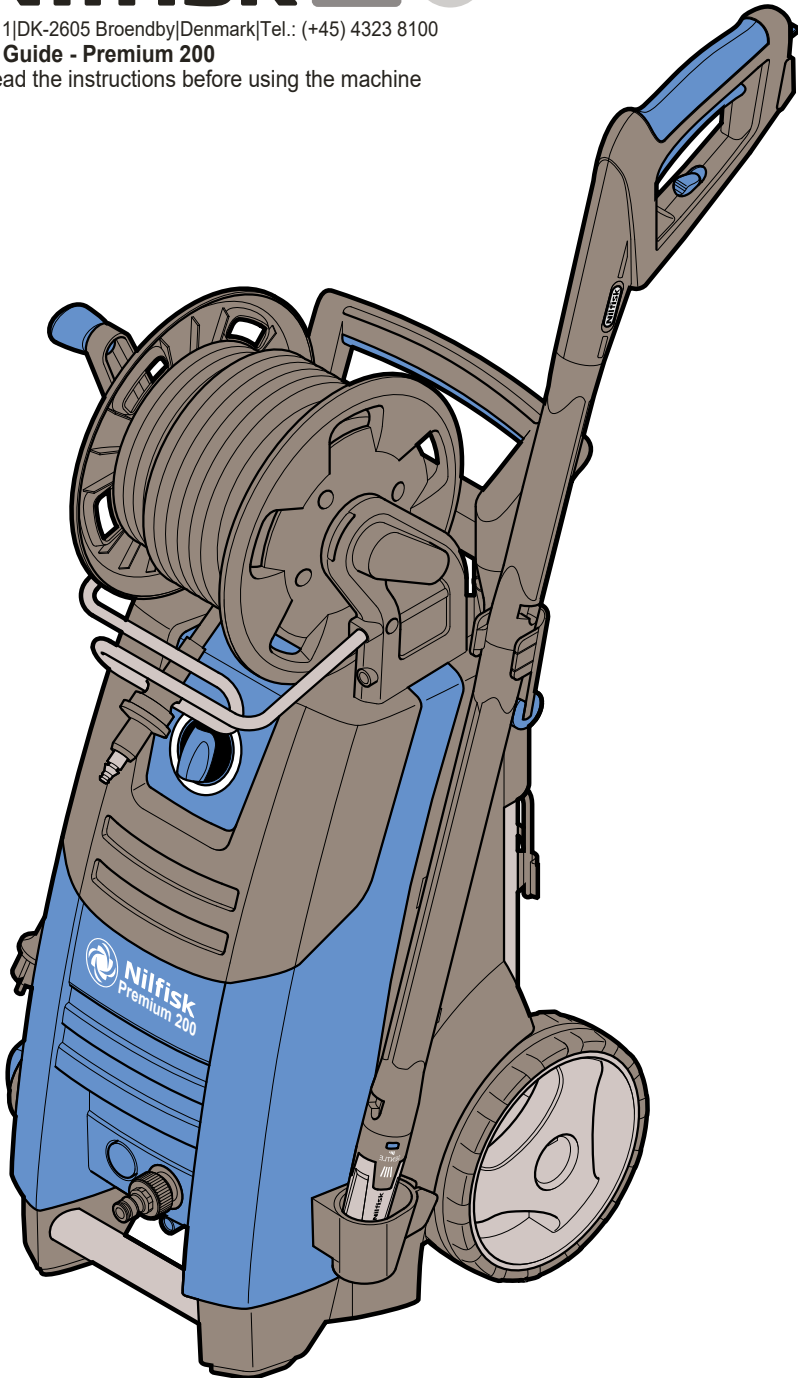


128337025

Kornmarksvej 1|DK-2605 Broendby|Denmark|Tel.: (+45) 4323 8100

Quick Start Guide - Premium 200

Caution: Read the instructions before using the machine

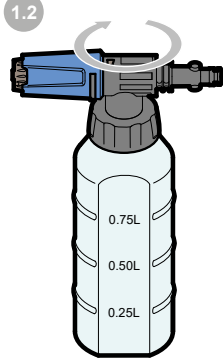
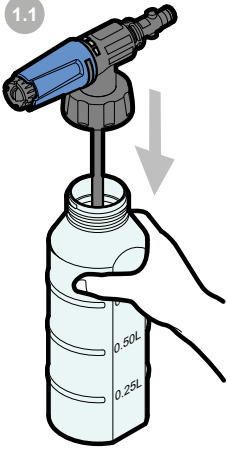


Premium 200

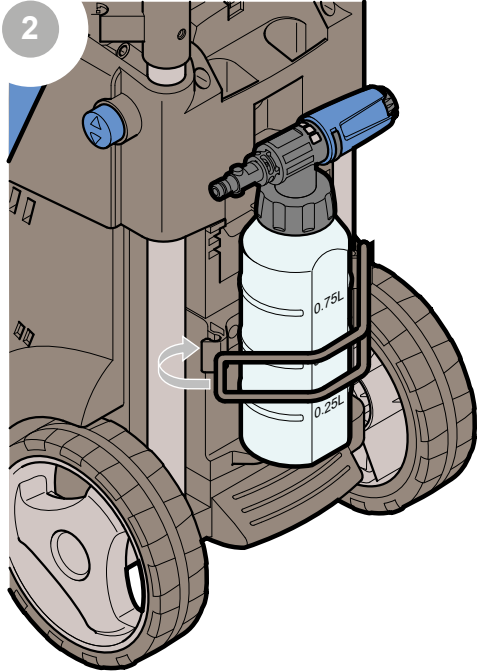
A



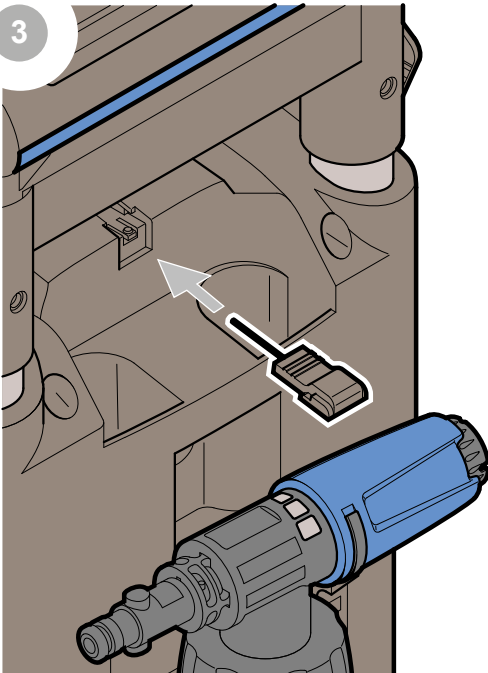
1



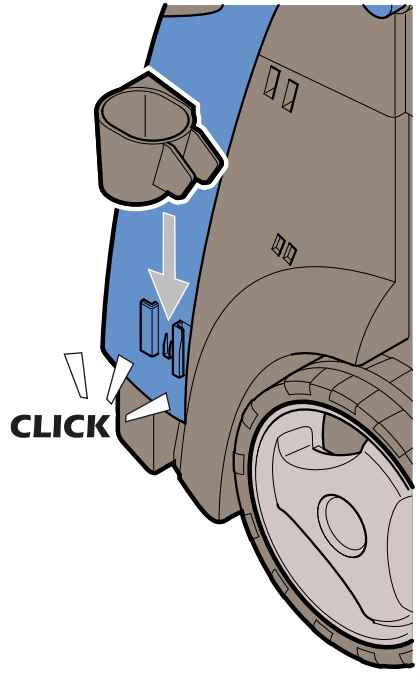
2



3



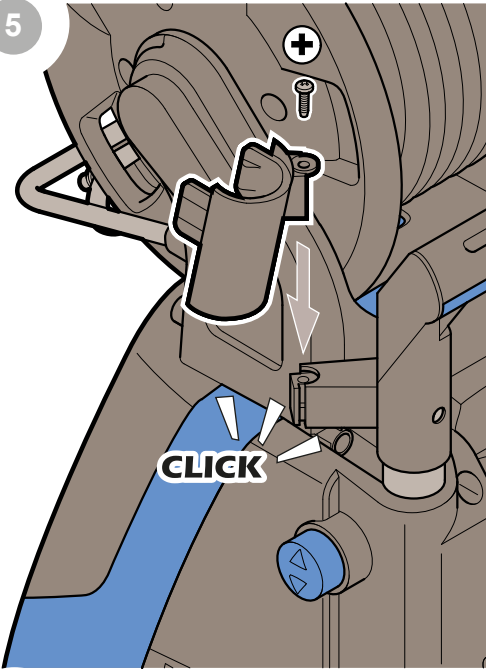
4



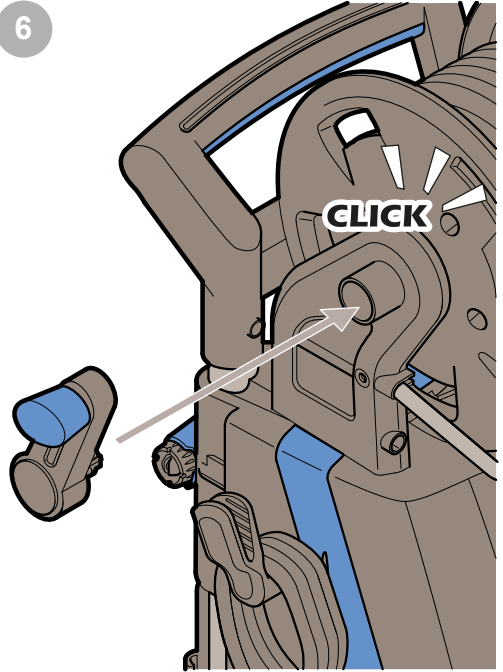
A



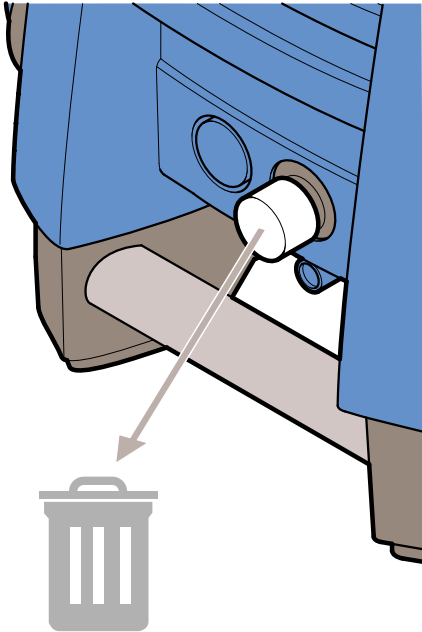
5



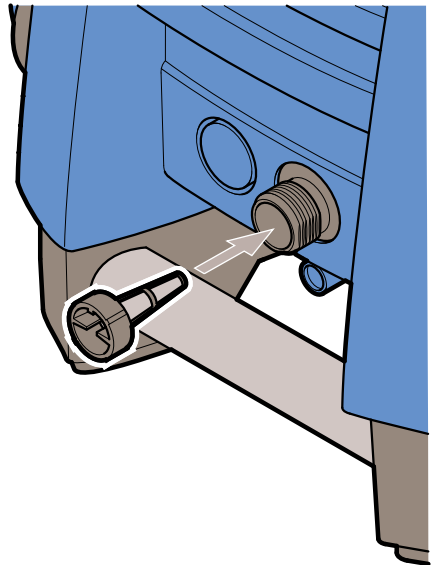
6



7



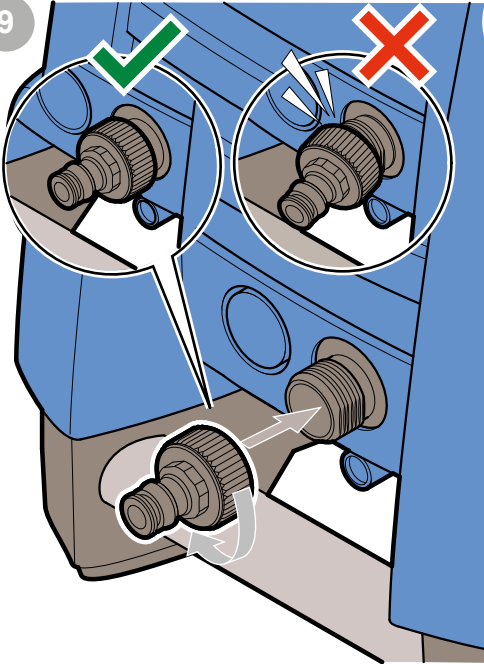
8



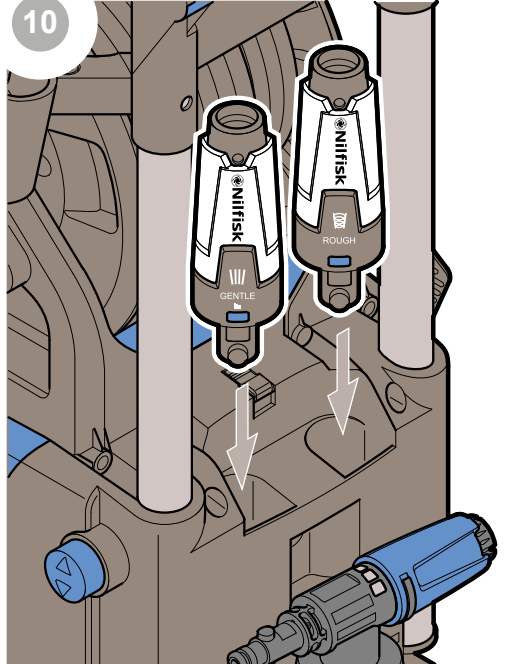
A



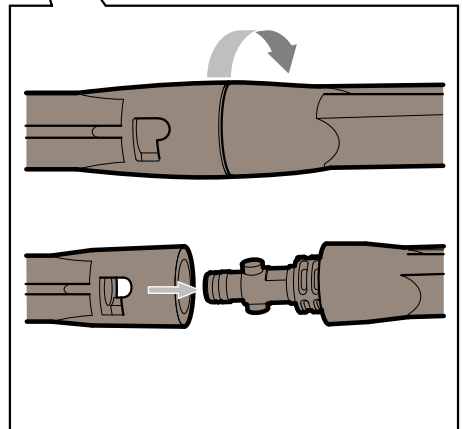
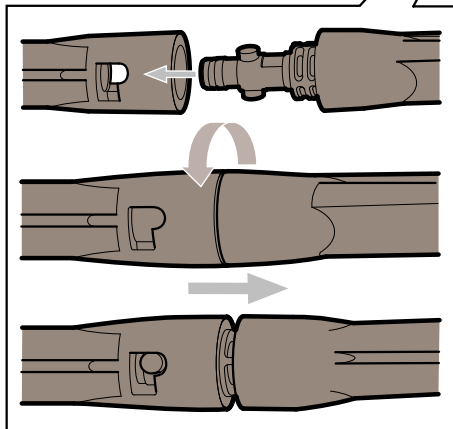
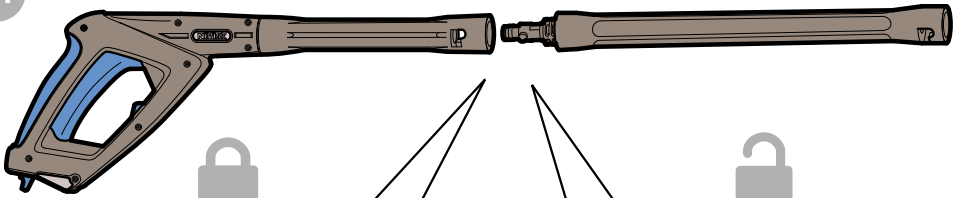
9



10



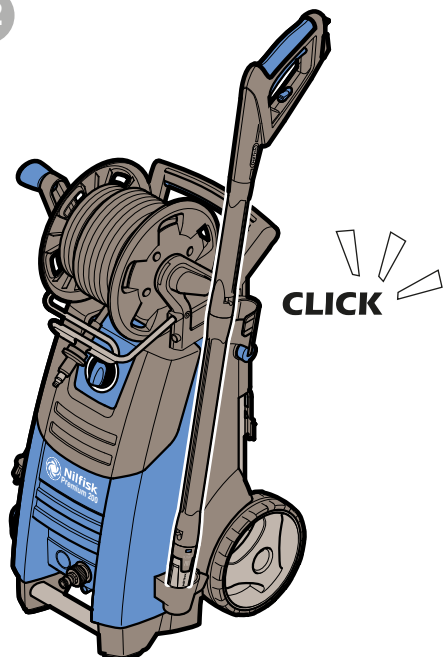
11



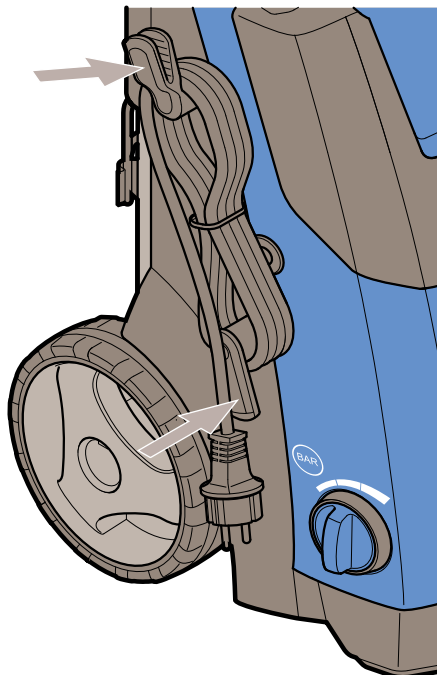
A



12



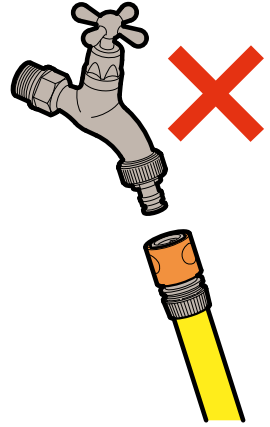
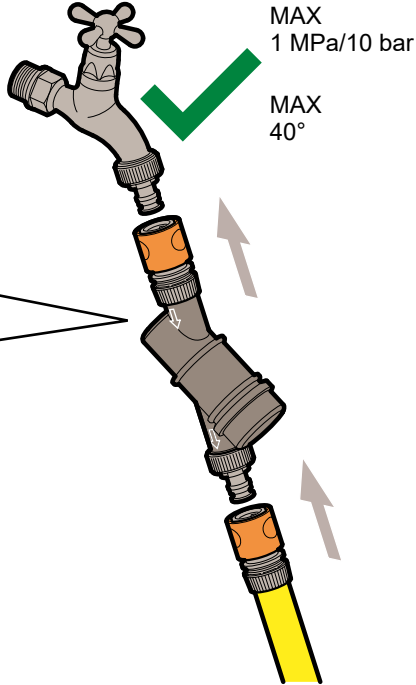
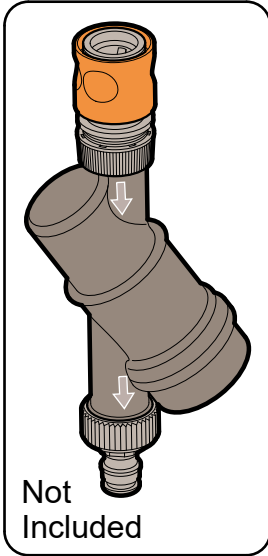
13



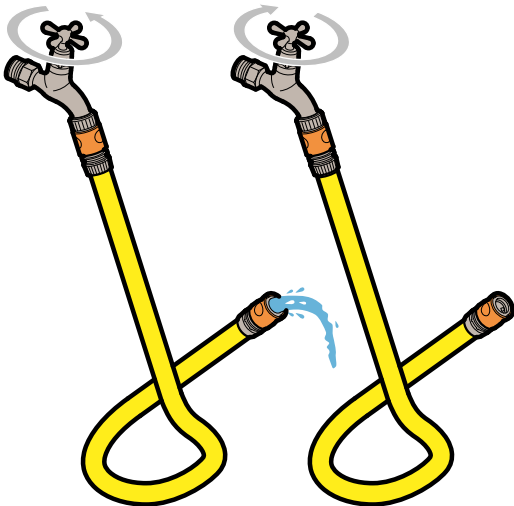
B



1



2



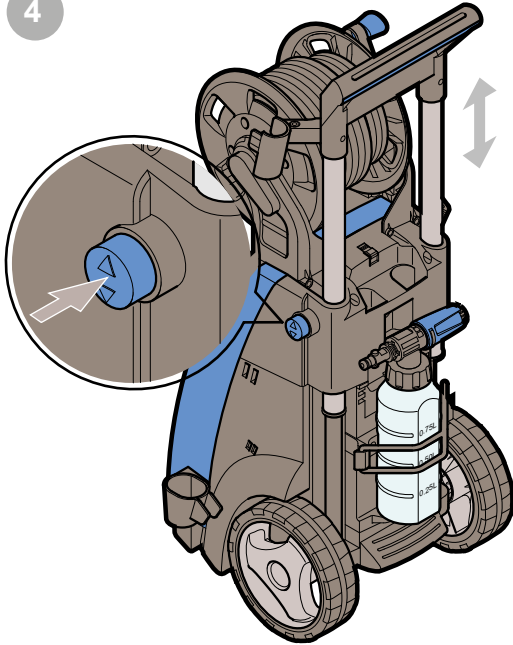
3



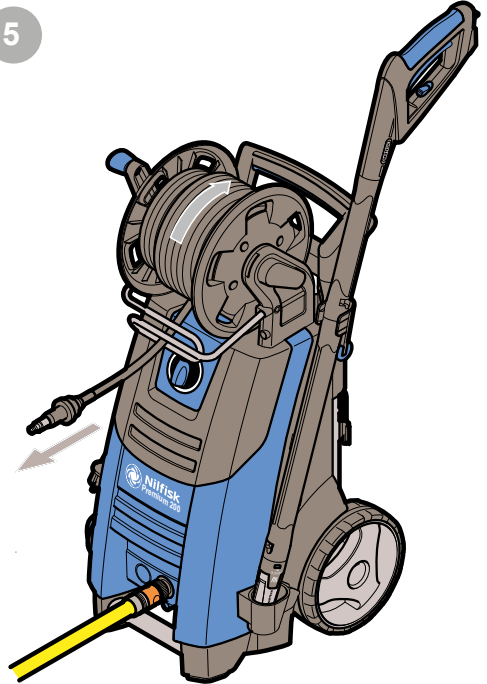
B



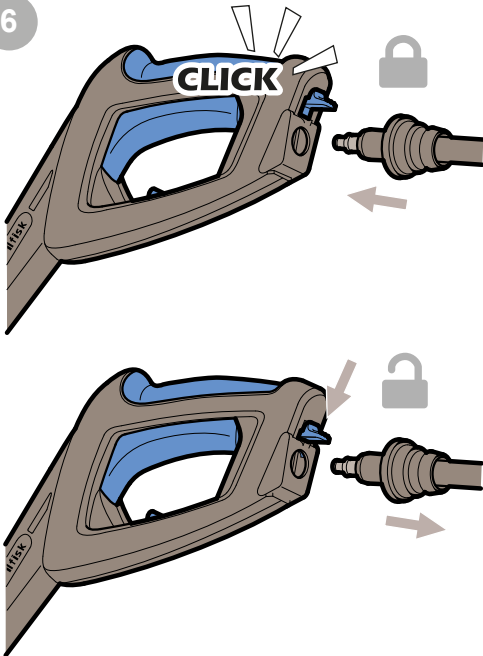
4



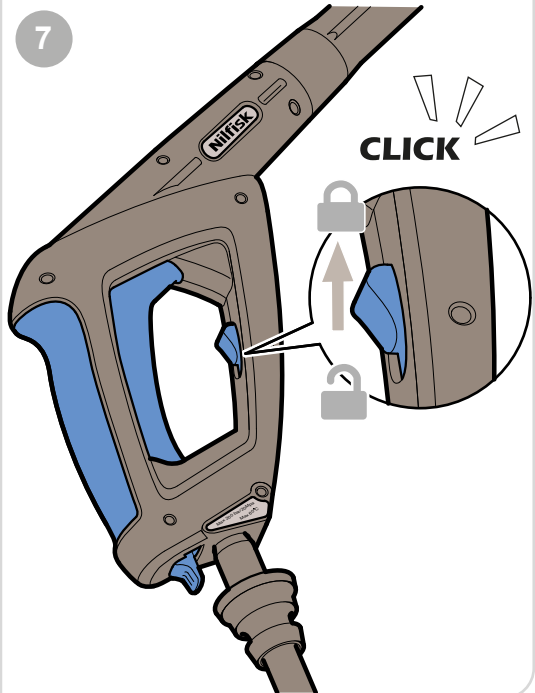
5



6



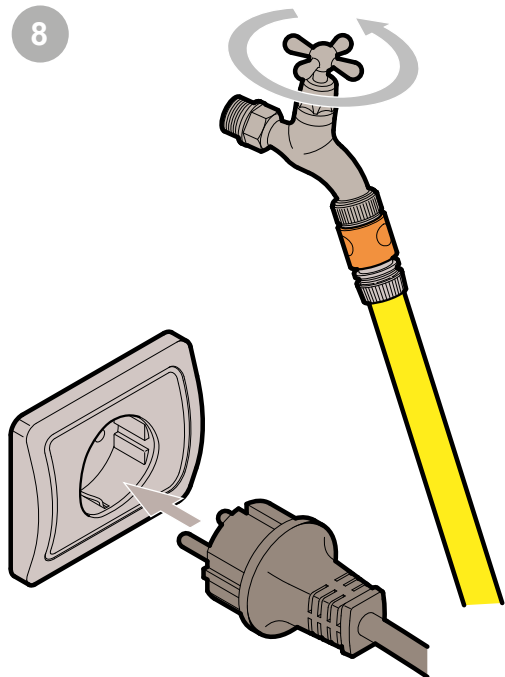
7



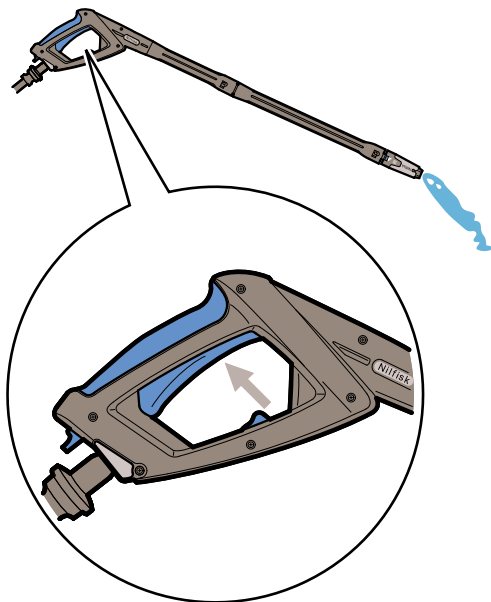
B



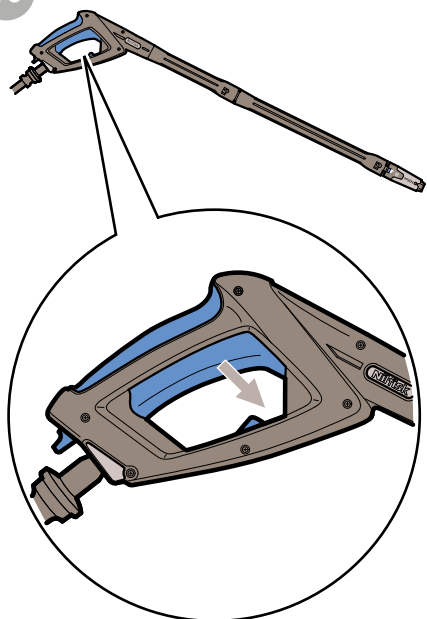
8



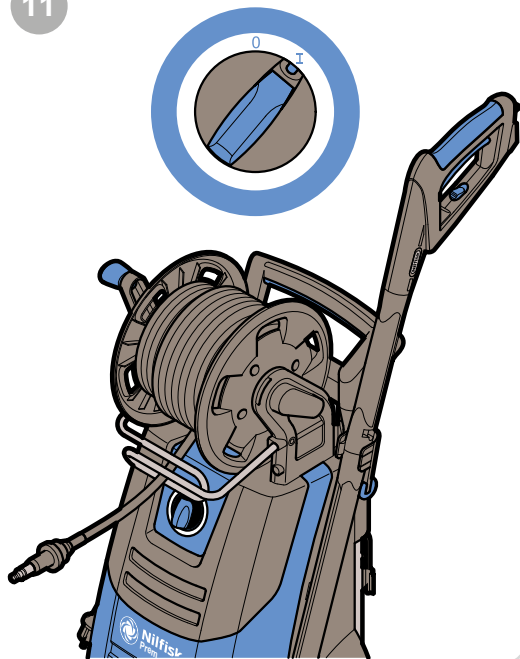
9



10



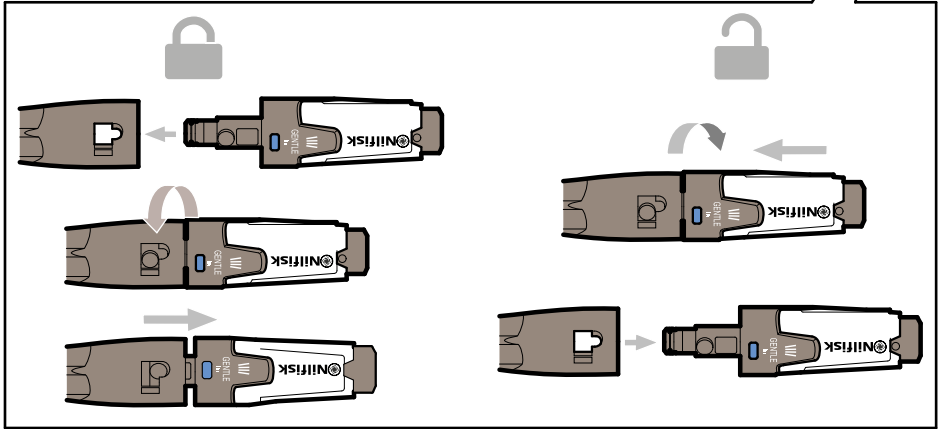
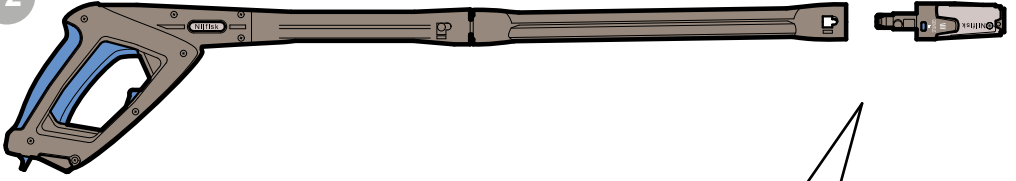
11



B



12



13



ROUGH NOZZLE

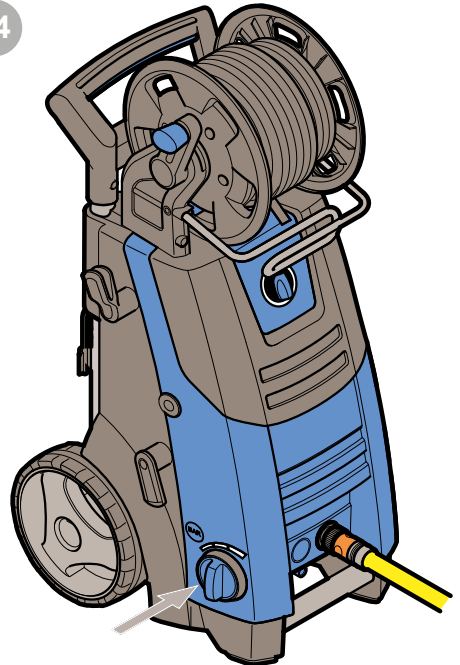
GENTLE NOZZLE



HARD SURFACES ONLY



14

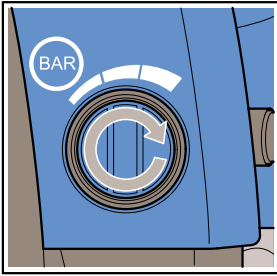


B



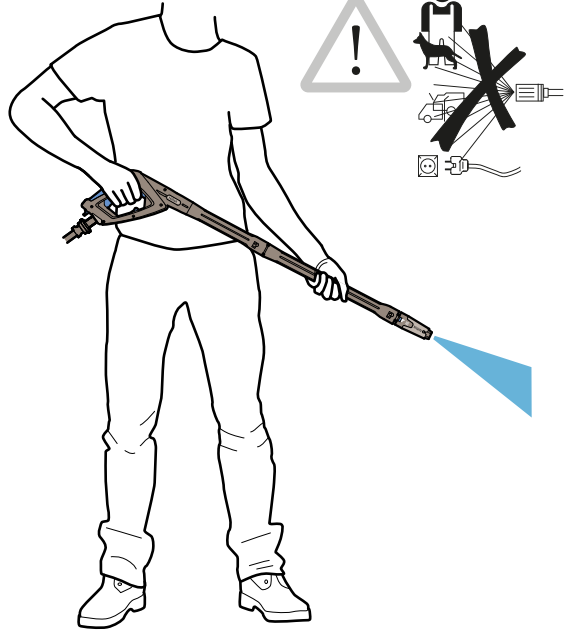
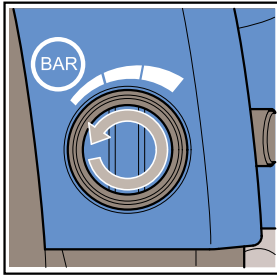
15

MAX

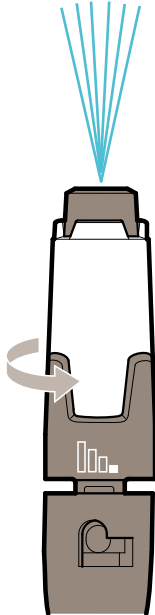


360° x 1,5

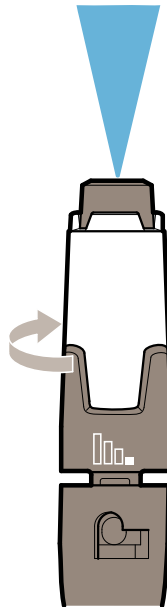
MIN



16



MIN



MAX

B



17

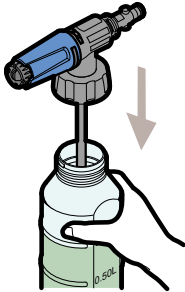
17.1



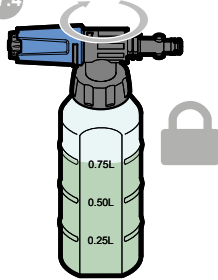
17.2



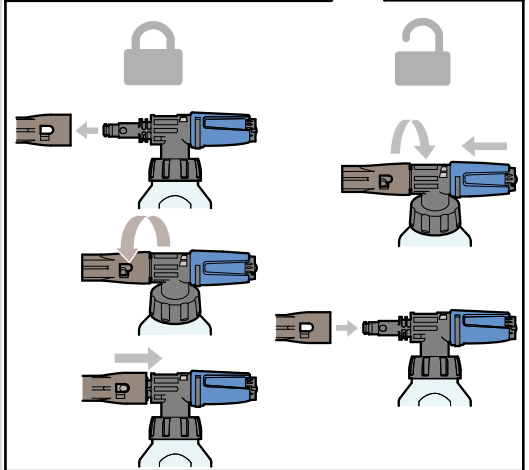
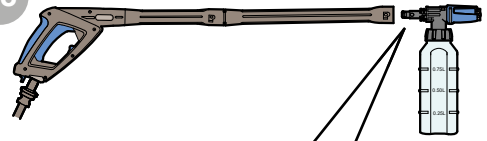
17.3



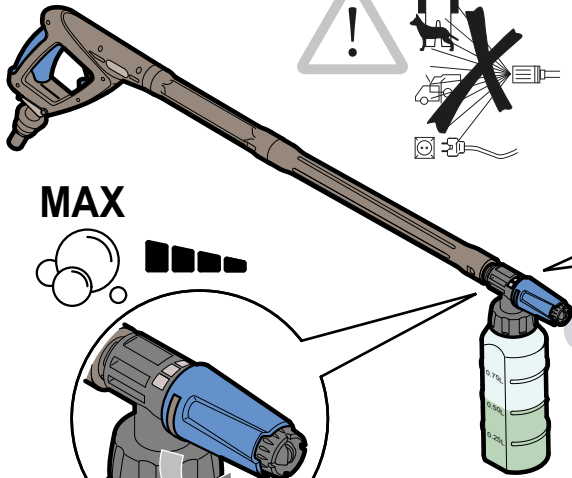
17.4



18



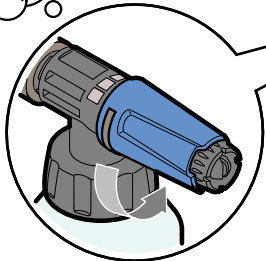
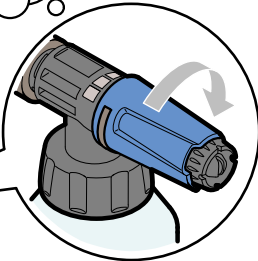
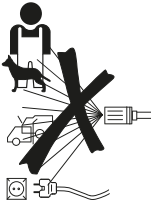
19



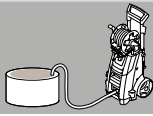
MAX



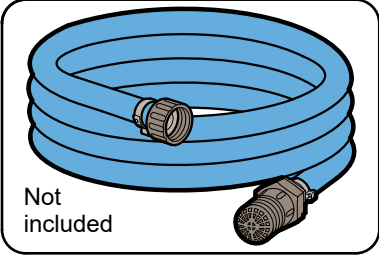
MIN



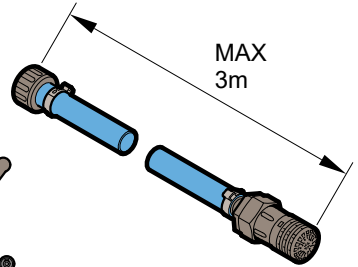
C



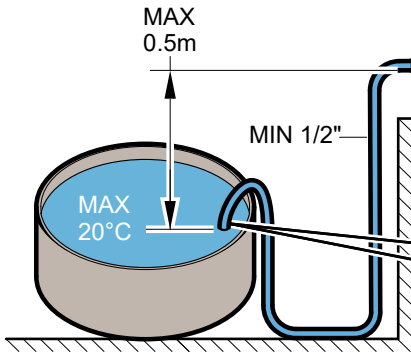
1



Not included



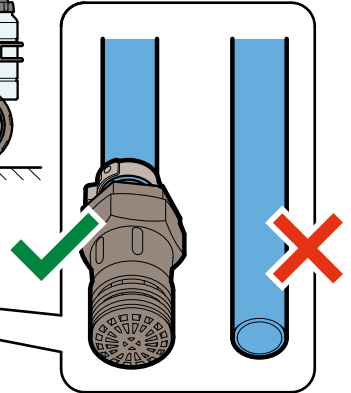
MAX
3m



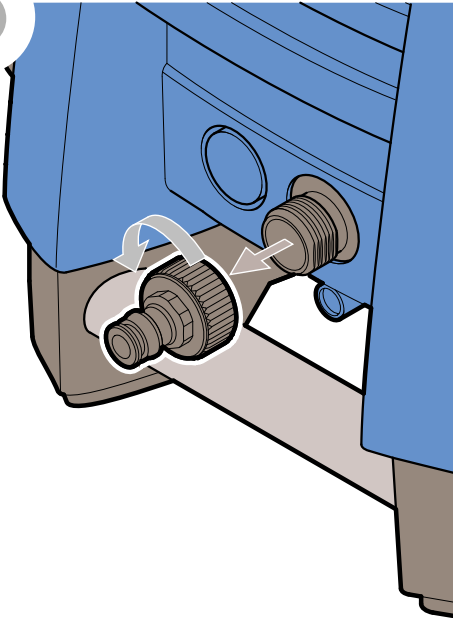
MAX
0.5m

MIN 1/2"

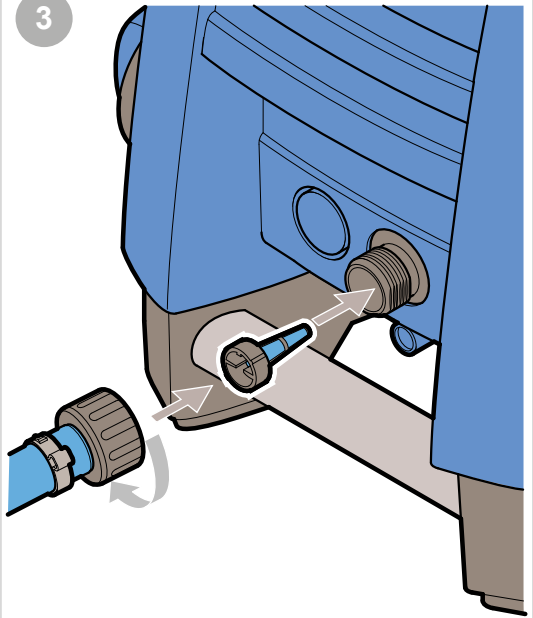
MAX
20°C



2



3

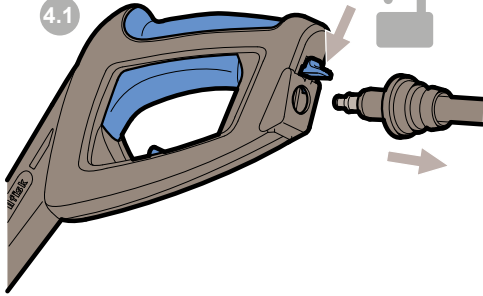


C

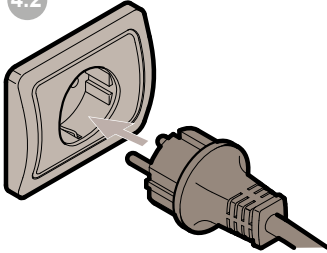


4

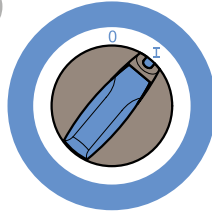
4.1



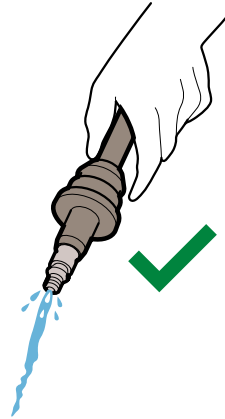
4.2



5

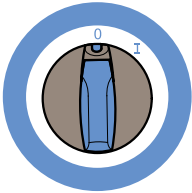


MAX 2min

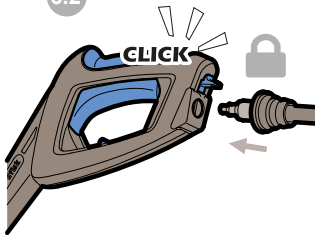


6

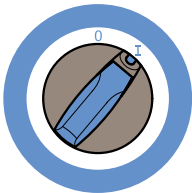
6.1



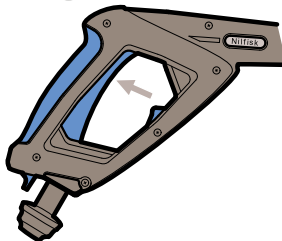
6.2



6.3



6.4



7

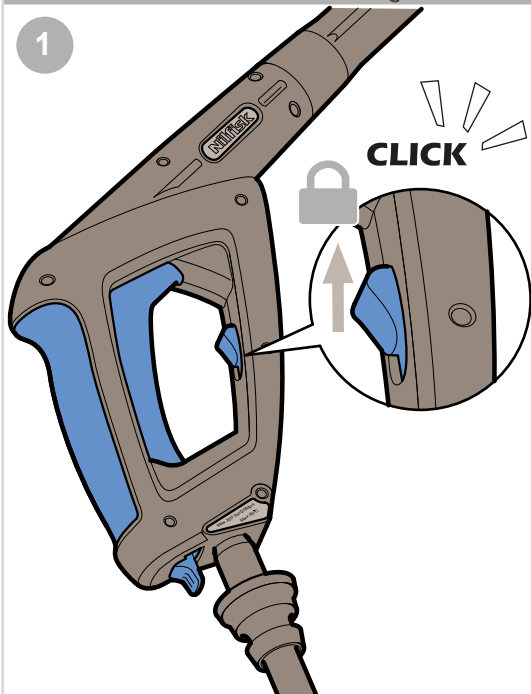


D

⏸ >5min

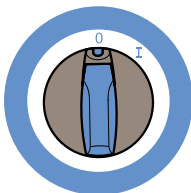


1

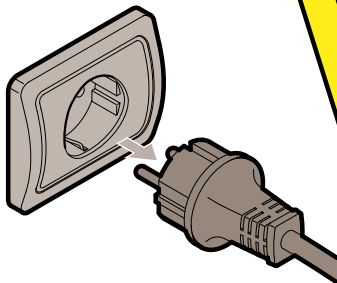


2

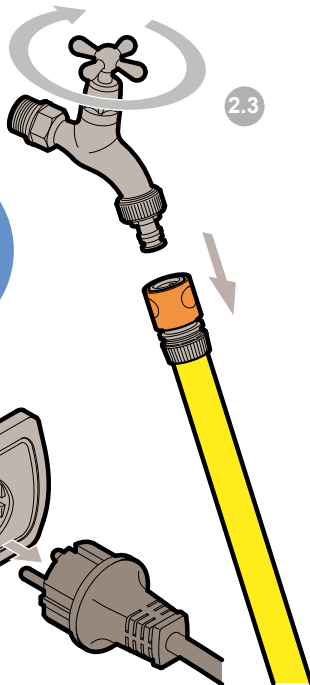
2.1



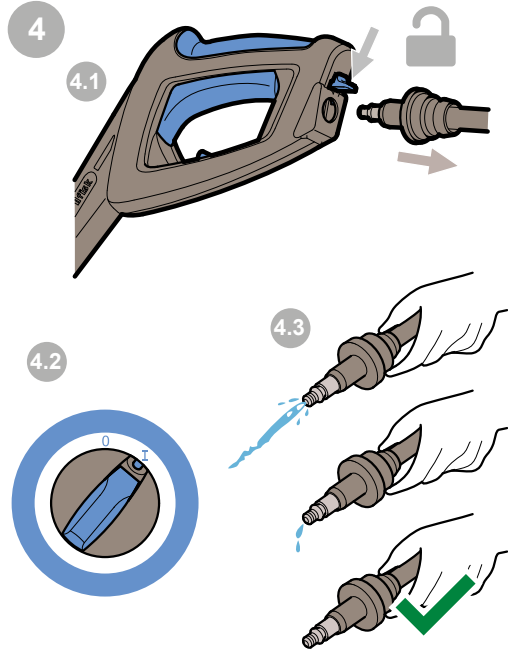
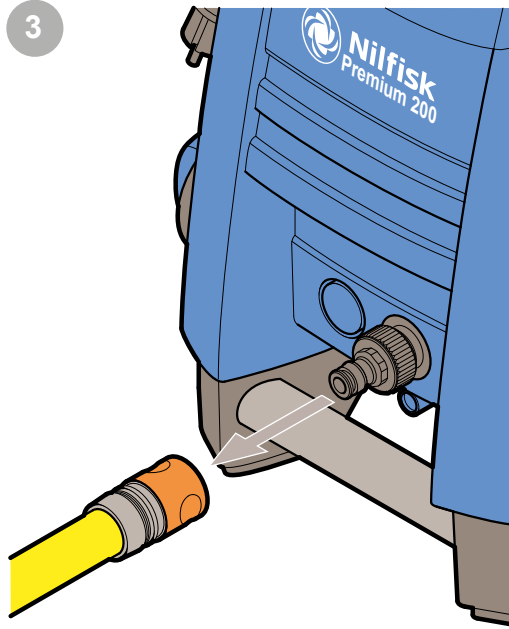
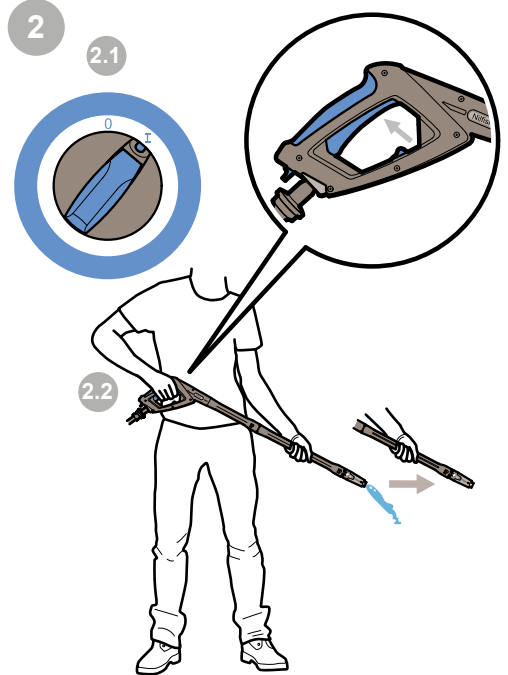
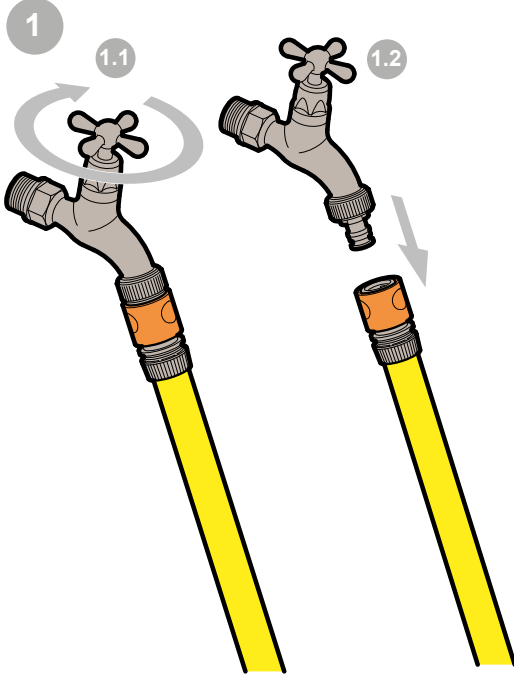
2.2



2.3



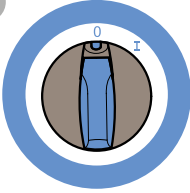
E



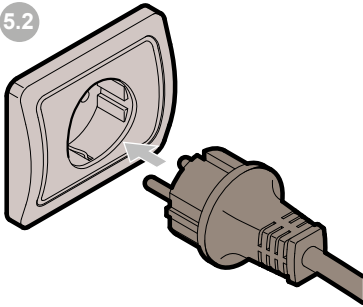


5

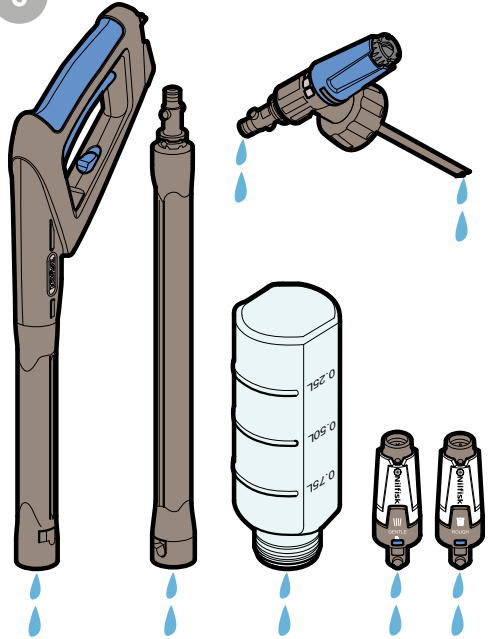
5.1



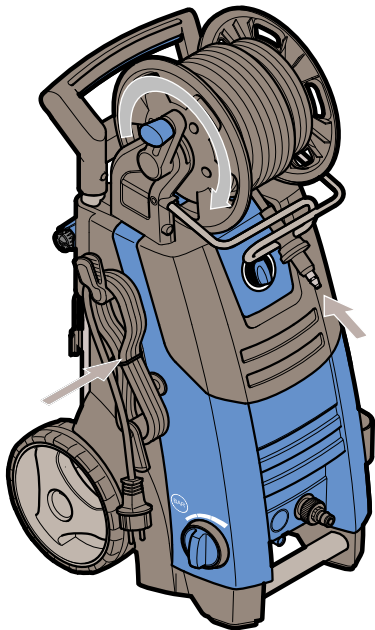
5.2



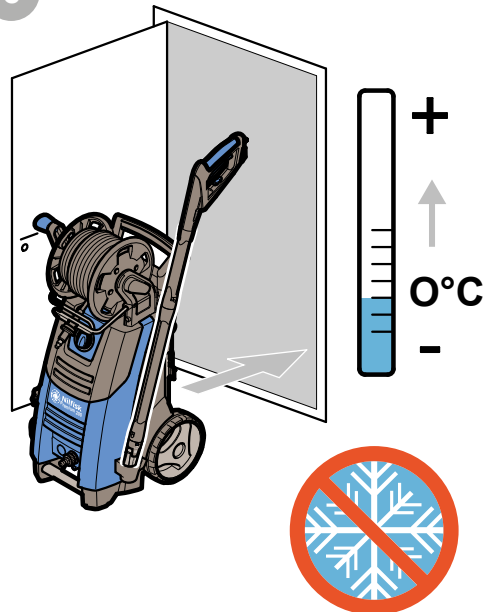
6



7



8

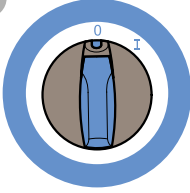


F

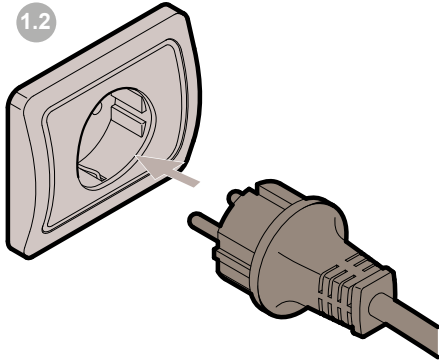


1

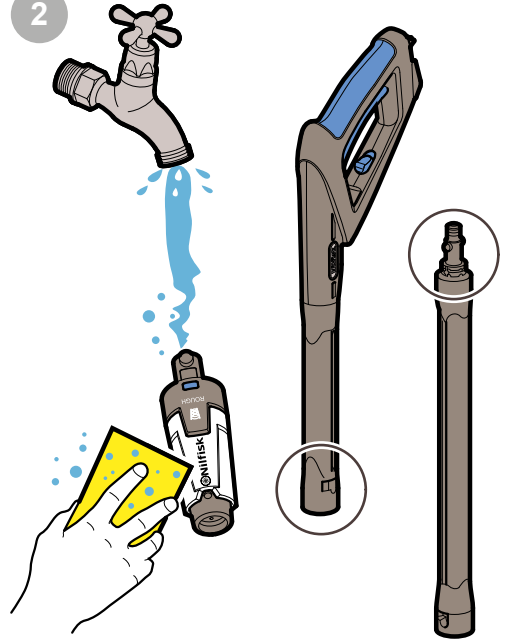
1.1



1.2

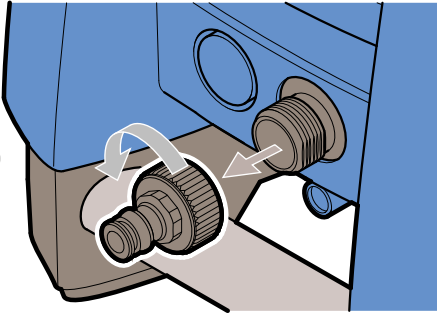


2

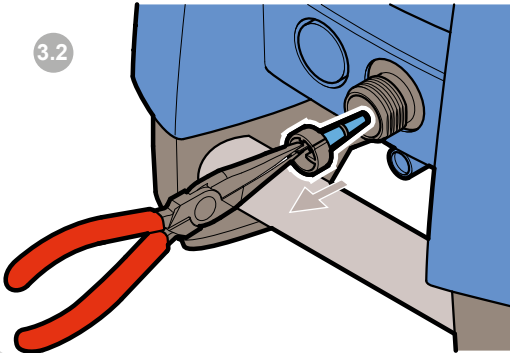


3

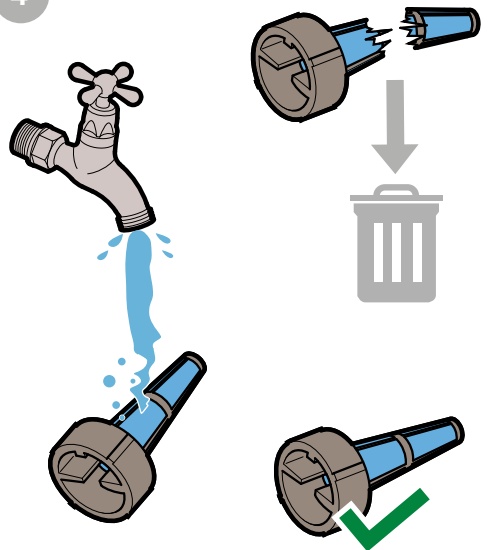
3.1



3.2



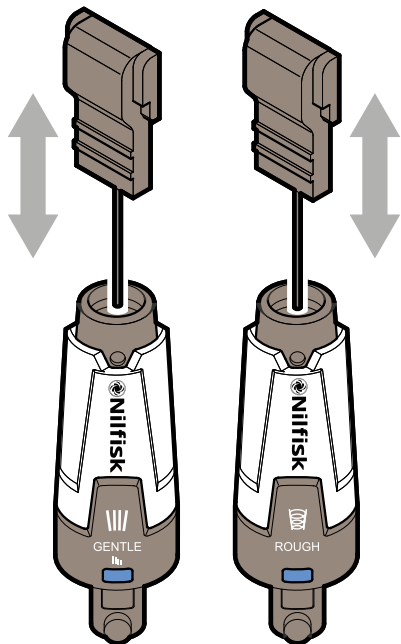
4



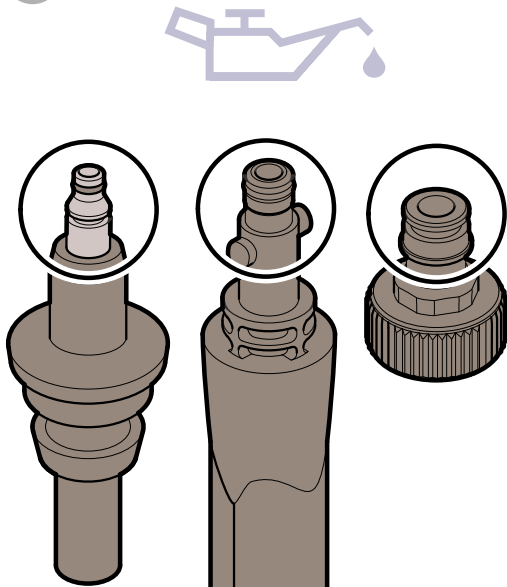
F



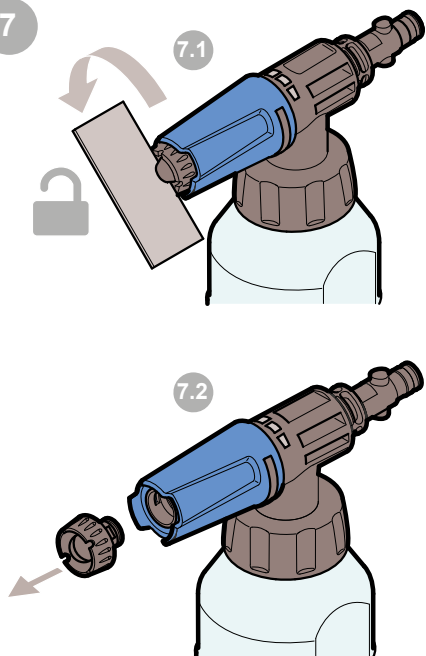
5



6



7



8



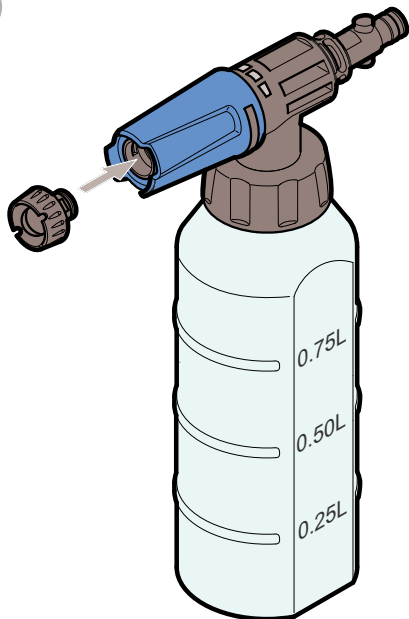
F



9



10



11

